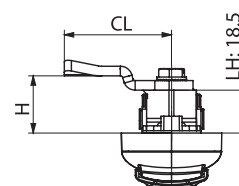
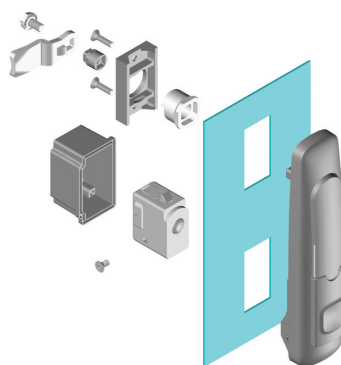
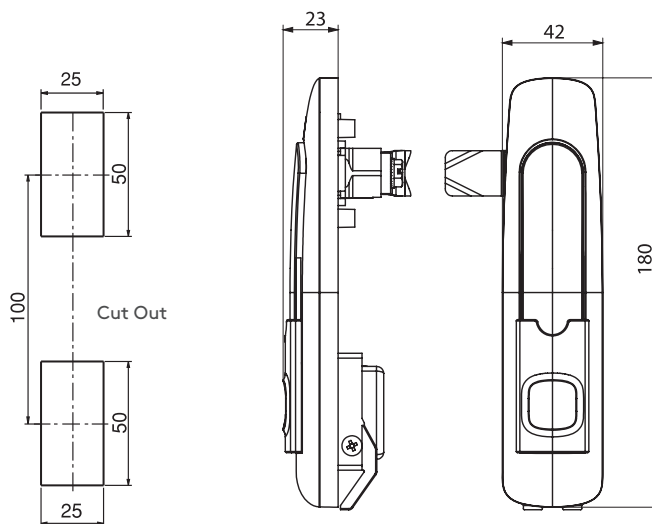
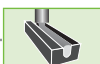


## MODULER SYSTEM SWINGHANDLE

406

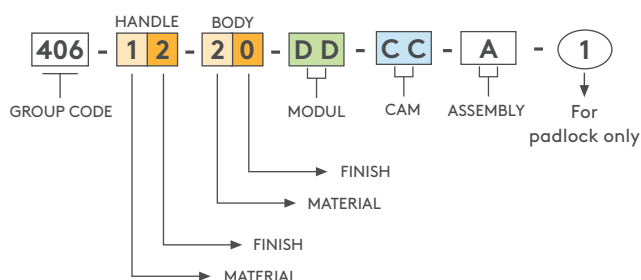


- Swing handle has a modular lock structure allows easy modification for customer requests
- Lock and modules could be ordered separately
- Single point locking and gearbox option is possible on same lock by an adaptor
- Padlock is optional
- Easy fixing option by plastic clips

### MATERIAL

BODY: PA6 GFR 30  
HANDLE: Zamak DIN-EN 1774-ZnAl4Cu1  
CAM: Steel  
SEAL: Polyurethane

### PRODUCT CODE



MATERIAL	M
Zamak	1
Plastic	2

FINISH	F
No finish	0
Black coated	2



1

Padlock application

- For cams please check pages: 172 - 173
- For rods please check pages: 178 - 188
- For keys please check pages: 189 - 191

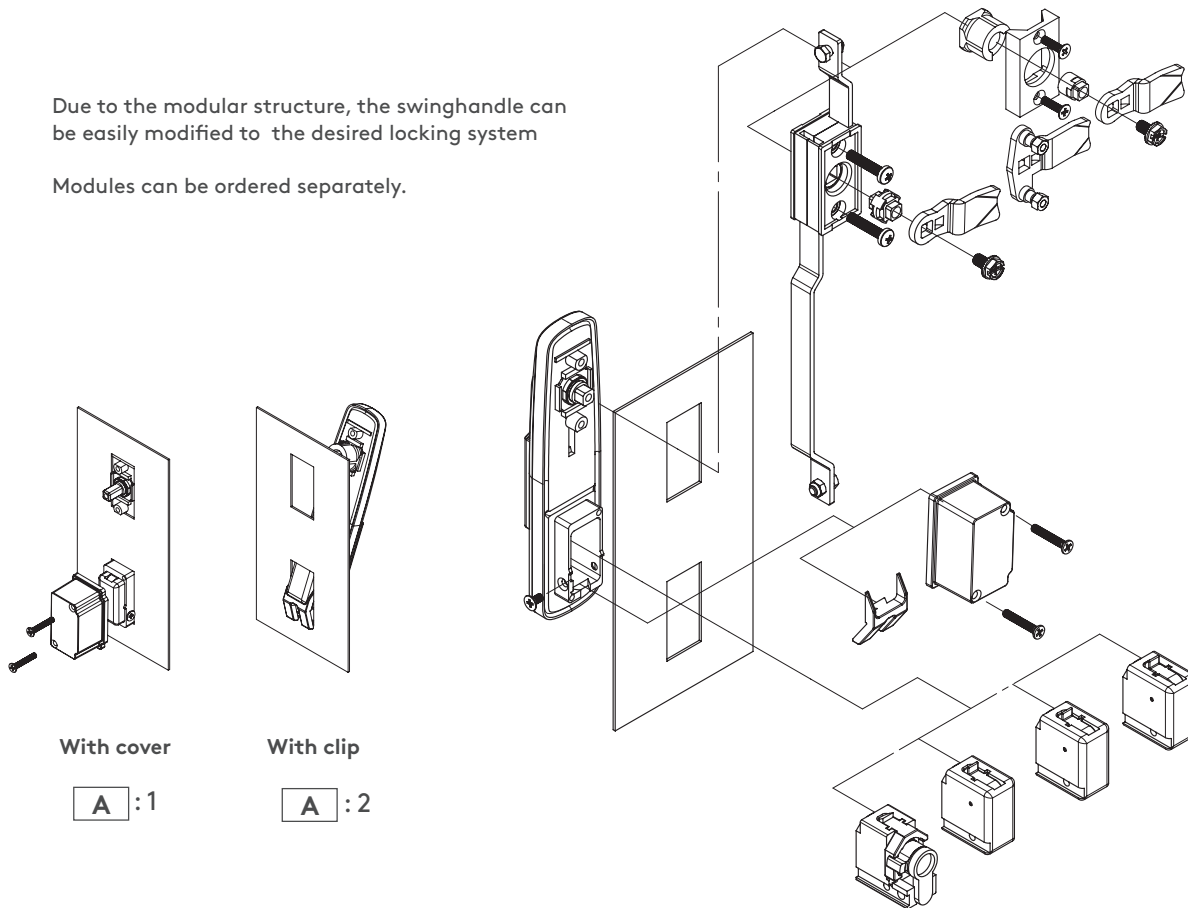
CYLINDER TYPE	DD	Item code:
Stainless steel dust cap (Keyed alike)	03	MDL03
Stainless steel dust cap (Keyed differ)	32	MDL32
Euro key (5333)	05	MDL05
CH751 (Stainless steel dust cap)	07	MDL07

DRIVERS	BUTTON	CYLINDER
5 mm Double bit	Zamak	Brass (keyed alike)
8 mm Square		
9 mm Triangular		
15	55	11
MDL15	MDL55	MDL11



Due to the modular structure, the swinghandle can be easily modified to the desired locking system

Modules can be ordered separately.



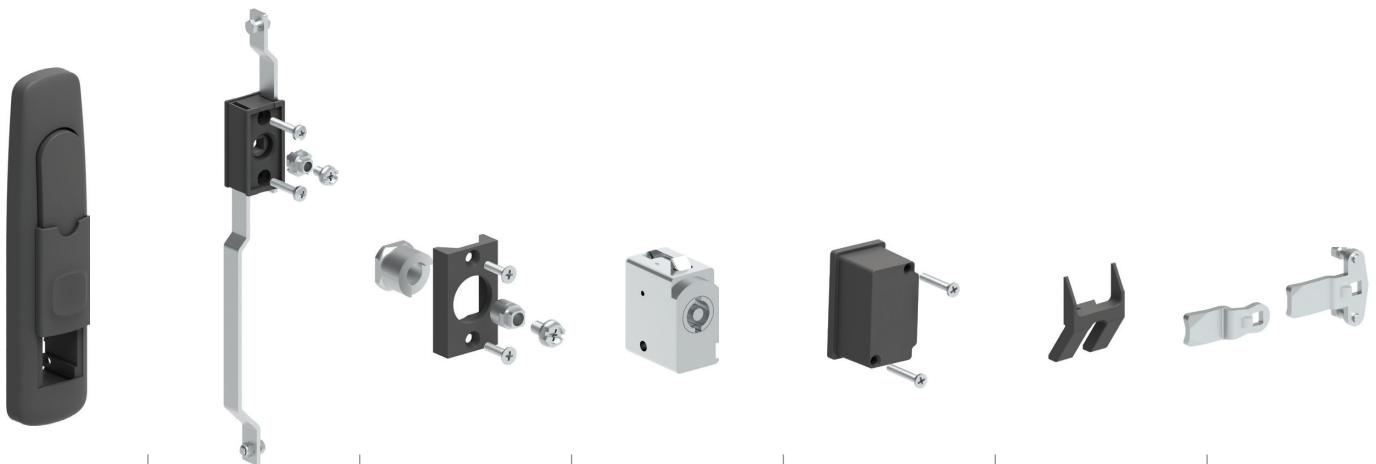
With cover

A : 1

With clip

A : 2

The set items can be ordered separately with their codes in below



MLS01

1-SET:

- Body
- Handle
- Dust cap
- Shaft

MLS02

1-SET:

- Plastic Mechanism
- Screws
- Cam Adapter

For multi point locking

MLS03

1-SET:

- Plastic Fixed Part
- Screws
- Cam Adapter

For single point locking

MDLXX

MODULES

- MDLXX

Please check the previous page

MLS05

1-SET:

- Plastic Fixed Part
- Screws

With this set the handle meet IP 65 specs.

320.02.246

1-PCS

- Clip-in part

With this clip-in part mounting time reduces by %50

CAMS

Please check the cams page 172-173